

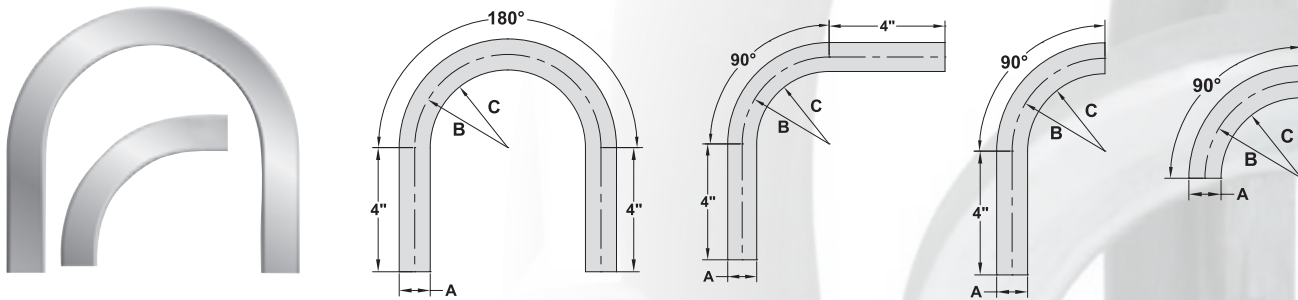


Sharpe Products offers an assortment of square tube fittings from square tube bends to square flanges. These products are available in steel, aluminum, and stainless steel. Please refer to the part charts for the specific material that each square fitting is available in. Stock products are available for same-day shipping if ordered before 2pm CST.

Custom square tube bends are also available. Please ask your sales representative about how to get a quote!

SQUARE TUBE BENDS

Square tube bends are only stocked in steel 11 gage (.120 wall) material. Aluminum and stainless steel square bends are made to order. 35°, 45°, and 55° elbows are also available. For additional sizes and materials please call for a quote.



6063 Alloy

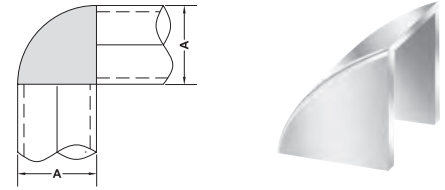
304 Alloy

A=Square Tube Size	Description	B=C.L.R.	C=I.R.	STEEL			ALUMINUM**			STAINLESS**		
				Wall Thickness	Part No.	Wt. Ea.	Wall Thickness	Part No.	Wt. Ea.	Wall Thickness	Part No.	Wt. Ea.
1"	90° NO TANGENTS	3"	2.50"	.120" (11 Gage)	SQ1005	0.57	.125"	SQ1005-AL	0.20	.120" (11 Gage)	SQ1005-SS	0.58
1"	90° W/ (1) 4" TANGENT	3"	2.50"	.120" (11 Gage)	SQ1006	1.04	.125"	SQ1006-AL	0.37	.120" (11 Gage)	SQ1006-SS	1.06
1"	90° W/ (2) 4" TANGENTS	3"	2.50"	.120" (11 Gage)	SQ1007	1.52	.125"	SQ1007-AL	0.54	.120" (11 Gage)	SQ1007-SS	1.55
1"	180° W/ (2) 4" TANGENTS	3"	2.50"	.120" (11 Gage)	SQ1008	2.09	.125"	SQ1008-AL	0.74	.120" (11 Gage)	SQ1008-SS	2.13
1.25"	90° NO TANGENTS	3"	2.375"	.120" (11 Gage)	SQ1255	0.71	.125"	SQ1255-AL	0.26	.120" (11 Gage)	SQ1255-SS	0.72
1.25"	90° W/ (1) 4" TANGENT	3"	2.375"	.120" (11 Gage)	SQ1256	1.31	.125"	SQ1256-AL	0.48	.120" (11 Gage)	SQ1256-SS	1.33
1.25"	90° W/ (2) 4" TANGENTS	3"	2.375"	.120" (11 Gage)	SQ1257	1.91	.125"	SQ1257-AL	0.69	.120" (11 Gage)	SQ1257-SS	1.94
1.25"	180° W/ (2) 4" TANGENTS	3"	2.375"	.120" (11 Gage)	SQ1258	2.62	.125"	SQ1258-AL	0.95	.120" (11 Gage)	SQ1258-SS	2.67
1.5"	90° NO TANGENTS	4.50"	3.75"	.120" (11 Gage)	SQ1505	1.31	.125"	SQ1505-AL	0.47	.120" (11 Gage)	SQ1505-SS	1.33
1.5"	90° W/ (1) 4" TANGENT	4.50"	3.75"	.120" (11 Gage)	SQ1506	2.04	.125"	SQ1506-AL	0.74	.120" (11 Gage)	SQ1506-SS	2.08
1.5"	90° W/ (2) 4" TANGENTS	4.50"	3.75"	.120" (11 Gage)	SQ1507	2.78	.125"	SQ1507-AL	1.00	.120" (11 Gage)	SQ1507-SS	2.83
1.5"	180° W/ (2) 4" TANGENTS	4.50"	3.75"	.120" (11 Gage)	SQ1508	4.08	.125"	SQ1508-AL	1.48	.120" (11 Gage)	SQ1508-SS	4.16
2"	90° NO TANGENTS	8"	7"	.120" (11 Gage)	SQ2005	3.09	.125"	SQ2005-AL	1.14	.120" (11 Gage)	SQ2005-SS	3.15
2"	90° W/ (1) 4" TANGENT	8"	7"	.120" (11 Gage)	SQ2006	4.07	.125"	SQ2006-AL	1.51	.120" (11 Gage)	SQ2006-SS	4.15
2"	90° W/ (2) 4" TANGENTS	8"	7"	.120" (11 Gage)	SQ2007	5.05	.125"	SQ2007-AL	1.87	.120" (11 Gage)	SQ2007-SS	5.15
2"	180° W/ (2) 4" TANGENTS	8"	7"	.120" (11 Gage)	SQ2008	8.13	.125"	SQ2008-AL	3.01	.120" (11 Gage)	SQ2008-SS	8.29

****PLEASE NOTE:** Aluminum and stainless steel square bends are considered a "made-to-order" item and are a NON-RETURNABLE/NON-REFUNDABLE part due to the processes used to produce them.

SQUARE CORNERS

Square corners are available in steel, stainless steel, and aluminum and supplied with a mill finish. Ideal for applications in which sharp corners are not desired. Simplifies fabrication by allowing you to square cut tubing instead of mitering.

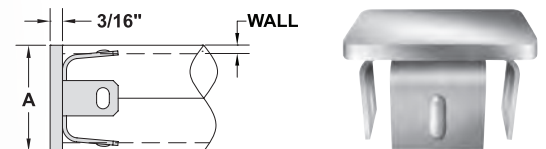


A=Square Tube Size	3003 Alloy		304 Alloy		304 Alloy	
	STEEL	ALUMINUM	ALUMINUM	STAINLESS	STAINLESS	STAINLESS
	Part No.	Wt. Ea.	Part No.	Wt. Ea.	Part No.	Wt. Ea.
1"	SQC100	0.05	SQC100-AL	0.02	SQC100-SS	0.05
1.25"	SQC125	0.09	SQC125-AL	0.03	SQC125-SS	0.09

A=Square Tube Size	3003 Alloy		304 Alloy		304 Alloy	
	STEEL	ALUMINUM	ALUMINUM	STAINLESS	STAINLESS	STAINLESS
	Part No.	Wt. Ea.	Part No.	Wt. Ea.	Part No.	Wt. Ea.
1.50"	SQC150	0.14	SQC150-AL	0.05	SQC150-SS	0.14
2"	SQC200	0.24	SQC200-AL	0.08	SQC200-SS	0.24

SQUARE DRIVE-ON CAPS

Square drive-on caps are available in steel, and aluminum and are supplied with a mill finish.

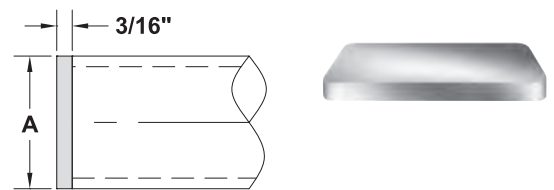


A=Square Tube Size	Wall Thickness	3003 Alloy		3003 Alloy	
		STEEL	ALUMINUM	ALUMINUM	ALUMINUM
		Part No.	Wt. Ea.	Part No.	Wt. Ea.
1" x 1"	11 Gage (.120)	SDOD100	.08	SDOD100-AL	.03
1.25" x 1.25"	11 Gage (.120)	SDOD125	.11	SDOD125-AL	.04

A=Square Tube Size	Wall Thickness	3003 Alloy		3003 Alloy	
		STEEL	ALUMINUM	ALUMINUM	ALUMINUM
		Part No.	Wt. Ea.	Part No.	Wt. Ea.
1.50" x 1.50"	11 Gage (.120)	SDOD150	.14	SDOD150-AL	.05
2" x 2"	11 Gage (.120)	SDOD200	.23	SDOD200-AL	.08

SQUARE WELD-ON CAPS

Square weld-on caps are available in steel, stainless steel, and aluminum and are supplied with a mill finish.



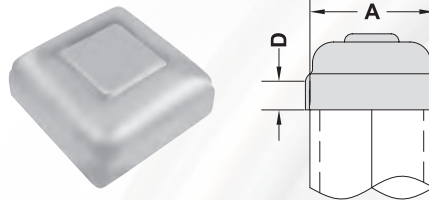
A=Square Tube Size	3003 Alloy		304 Alloy		304 Alloy	
	STEEL	ALUMINUM	ALUMINUM	STAINLESS	STAINLESS	STAINLESS
	Part No.	Wt. Ea.	Part No.	Wt. Ea.	Part No.	Wt. Ea.
1" x 1"	SWOD100	0.01	SWOD100-AL	0.01	SWOD100-SS	0.01
1.25" x 1.25"	SWOD125	0.08	SWOD125-AL	0.03	SWOD125-SS	0.08

A=Square Tube Size	3003 Alloy		304 Alloy		304 Alloy	
	STEEL	ALUMINUM	ALUMINUM	STAINLESS	STAINLESS	STAINLESS
	Part No.	Wt. Ea.	Part No.	Wt. Ea.	Part No.	Wt. Ea.
1.50" x 1.50"	SWOD150	0.11	SWOD150-AL	0.04	SWOD150-SS	0.11
2" x 2"	SWOD200	0.19	SWOD200-AL	0.07	SWOD200-SS	0.20



SQUARE NEWEL POST CAPS

Square newel post caps are available in steel, stainless steel, and aluminum and are supplied with a mill finish. All newel caps are stamped out of 18 gage (.049) material. When using aluminum tubing, corners of tubing may need to be ground to drive on caps over the outside of tube.



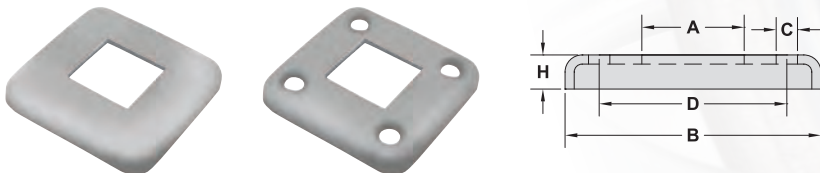
3003 Alloy

304 Alloy

A= Square Tube Size	D= Drive-on Depth	STEEL		ALUMINUM		STAINLESS	
		Part No.	Wt. Ea.	Part No.	Wt. Ea.	Part No.	Wt. Ea.
.75"	1/4"	NC075	0.02	NC075-AL	0.01	NC075-SS	0.02
1"	1/4"	NC100	0.04	NC100-AL	0.02	NC100-SS	0.04
1.25"	5/16"	NC125	0.07	NC125-AL	0.03	NC125-SS	0.07
1.50"	5/16"	NC150	0.09	NC150-AL	0.03	NC150-SS	0.09
2"	3/8"	NC200	0.11	NC200-AL	0.04	NC200-SS	0.11
2.50"	1/2"	NC250	0.20	NC250-AL	0.06	NC250-SS	0.2
3"	1/2"	NC300	0.28	NC300-AL	0.09	NC300-SS	0.29
3.50"	1/2"	NC350	0.36	NC350-AL	0.12	NC350-SS	0.37
4"	5/8"	NC400	0.44	NC400-AL	0.15	NC400-SS	0.45
5"	5/8"	NC500	0.50	NC500-AL	0.17	NC500-SS	0.51

SQUARE FLANGES

Square flanges are available in steel and aluminum. Aluminum flanges are stamped out of .125" material, and steel square flanges are stamped out of 10 gage material. Flanges for rectangular tubing also available. For additional sizes and other special materials please call for a quote.



3003 Alloy

A=Tube Size	Holes	B=Base	C= Hole Dia.	D=Hole Distance	H=Height	STEEL		ALUMINUM	
						Part No.	Wt. Ea.	Part No.	Wt. Ea.
0.75"	0	3.00" Sq.				SQFF0750	0.48	SQFF0750-AL	0.14
0.75"	4	3.00" Sq.	5/16"	2.0"	3/8"	SQFF0754	0.46	SQFF0754-AL	0.13
1.00"	0	3.00" Sq.				SQFF1000	0.42	SQFF1000-AL	0.16
1.00"	4	3.00" Sq.	5/16"	2.0"	3/8"	SQFF1004	0.41	SQFF1004-AL	0.15
1.25"	0	3.00" Sq.				SQFF1250	0.40	SQFF1250-AL	0.13
1.25"	4	3.00" Sq.	5/16"	2.0"	3/8"	SQFF1254	0.38	SQFF1254-AL	0.13
1.50"	0	3.75" Sq.				SQFF1500	0.58	SQFF1500-AL	0.19
1.50"	4	3.75" Sq.	5/16"	2.75"	3/8"	SQFF1504	0.57	SQFF1504-AL	0.18
1.75"	0	3.75" Sq.				SQFF1750	0.52	SQFF1750-AL	0.18
1.75"	4	3.75" Sq.	5/16"	2.75"	3/8"	SQFF1754	0.50	SQFF1754-AL	0.19
2"	0	3.75" Sq.				SQFF2000	0.60	SQFF2000-AL	0.17
2"	4	3.75" Sq.	5/16"	2.75"	3/8"	SQFF2004	0.58	SQFF2004-AL	0.16