

Our caps come in steel, stainless steel, and aluminum. All caps are supplied with a mill finish. Stock products are available for same-day shipping if ordered before 2pm CST.

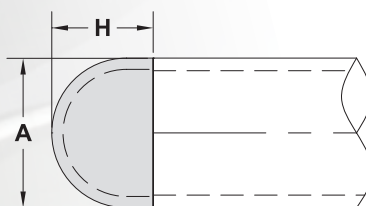
For pricing on special finishes, please call to request a quote. Quantity Discounts and Sharpe Thinkers member special discounts available.



DOMED WELD-ON CAPS

Our domed weld-on caps are available in steel, stainless steel, and aluminum and are made out of 10 gage material, except parts noted with an asterisk. These caps are supplied with a mill finish. For additional sizes, materials, and finishes please call for a quote.

WALL THICKNESS		
STEEL	ALUMINUM	STAINLESS
10 Gage	.132"	11 Gage



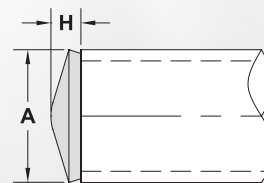
A=Pipe or Tube Diameter	H=Height	STEEL		ALUMINUM		STAINLESS	
		Part No.	Wt. Ea.	Part No.	Wt. Ea.	Part No.	Wt. Ea.
1"	9/16"	9100	0.05	9800	0.02	9900	0.50
1.050" (3/4" Pipe)	9/16"	9101	0.05	9801	0.02	9901	0.05
1.25"	7/8"	9102	0.11	9802	0.04	9902	0.11
1.315" (1" Pipe)	1"	9103	0.13	9803	0.05	9903	0.13
1.50"	7/8"	9104	0.15	9804	0.05	9904	0.15
1.66" (1 1/4" Pipe)	7/8"	AK211	0.14	AKA211	0.05		
1.66" (1 1/4" Pipe)	1-1/8"	9105	0.19	9805	0.07	9905	0.19
1.90" (1 1/2" Pipe)	7/8"	AK212	0.20	AKA212	0.07		
1.90" (1 1/2" Pipe)	1-1/8"	9106	0.23	9806	0.08	9906	0.23
2"	1-1/4"	9107	0.26	9807	0.09	9907	0.27
2.375" (2" Pipe)	1-3/8"	9108	0.30	9808	0.12	9908	0.31
2.50"	1-5/16"	9109	0.31	9809	0.13	9909	0.31
2.875" (2 1/2" Pipe)	1-1/4"	9110	0.46	9810	0.16	9910	0.47
3"	1-7/16"	9111	0.46	9811	0.17	9911	0.47
3.50" (3" Pipe)	1-1/4"	9112	0.54	9812	0.19	9912	0.55
4" (3 1/2" Pipe)	1-1/2"	9113	0.73	9813	0.25	9913	0.74
4.50" (4" Pipe)	1-5/8"	9114	0.90	9814	0.31	9914	0.92
5.563" (5" Pipe)	3"	9116*	4.60				
6.625" (6" Pipe)	3"	9117-10	2.40				
6.625" (6" Pipe)	3-1/2"	9117*	6.90				
8.625" (8" Pipe)	4"	9119*	11.8				
10.75" (10" Pipe)	5"	9121*	20.8				

*These are forged caps with a Schedule 40 thickness. Covered with a rust protective paint.



DISHED DISK WELD-ON CAPS

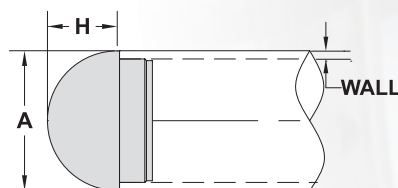
Dished disk weld-on caps are available in steel, stainless steel, and aluminum and are made out of 3/16" thick material. These caps are supplied with a mill finish. For additional sizes, materials, and finishes please call for a quote.



A = Pipe or Tube Diameter	H = Height	STEEL		3003 Alloy ALUMINUM		304 Alloy STAINLESS	
		Part No.	Wt. Ea.	Part No.	Wt. Ea.	Part No.	Wt. Ea.
1.315" (1" Pipe)	.375"	DD132	0.07	DD132-AL	0.03	DD132-SS	0.07
1.50"	.375"	DD150	0.09	DD150-AL	0.03	DD150-SS	0.09
1.66" (1 1/4" Pipe)	.375"	DD166	0.11	DD166-AL	0.04	DD166-SS	0.11
1.90" (1 1/2" Pipe)	.375"	DD190	0.15	DD190-AL	0.05	DD190-SS	0.15
2.00"	.375"	DD200	0.17	DD200-AL	0.06	DD200-SS	0.17
2.375" (2" Pipe)	.375"	DD238	0.24	DD238-AL	0.08	DD238-SS	0.24

TYPE B-BULLET DRIVE-ON CAPS

The Type B-bullet drive-on cap is a one piece construction except for the 1" pipe size. These caps are available in steel and aluminum and are supplied with a mill finish. For additional sizes, materials, and finishes please call for a quote.



A = Pipe or Tube Diameter	Fits Wall Thickness	H = Height	STEEL		5052 Alloy ALUMINUM	
			Part No.	Wt. Ea.	Part No.	Wt. Ea.
1.315" (1" Pipe)	.133" (Sch 40)	1"	DOC132B	.20	DOC132B-AL	.07
1.50"	.120" (11 Gage)	1"	DOC150B	.21	DOC150B-AL	.07
1.66" (1 1/4" Pipe)	.109" (Sch 10)	1"	DOC166B10	.25	DOC166B-AL	.08
1.66" (1 1/4" Pipe)	.140" (Sch 40)	1"	DOC166B	.25	DOC166B-AL	.08
1.90" (1 1/2" Pipe)	.109" (Sch 10)	7/8"	DOC190B10	.33	DOC190B-AL	.10
1.90" (1 1/2" Pipe)	.145" (Sch 40)	7/8"	DOC190B	.33	DOC190B-AL	.10

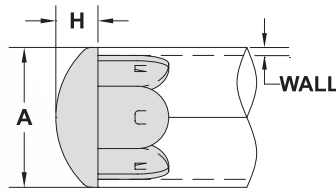
QUANTITY DISCOUNTS AVAILABLE

1-99 Total Pieces List Price 100-499 Total Pieces Less 10%
 500-999 Total Pieces Less 15% 1000 + Pieces Less 20%

Quantity Discounts Not Available on Disks.
 See Page 58 on How You Can Save an Additional 10% Discount by Becoming a "Sharpe Thinker"!

TYPE D-DISHED DRIVE-ON CAPS

Type D-dished drive-on caps are available in steel, stainless steel, and aluminum. Stainless steel and aluminum Type D caps are supplied with a #4 satin finish. For additional sizes, materials, and finishes please call for a quote.



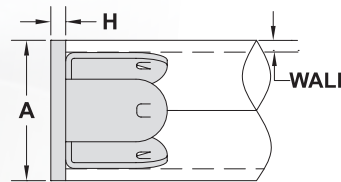
3003 Alloy

304 Alloy

A=Pipe or Tube Diameter	Fits Wall Thickness	H=Height	STEEL		ALUMINUM		STAINLESS	
			Part No.	Wt. Ea.	Part No.	Wt. Ea.	Part No.	Wt. Ea.
1.50"	.065" (16 Gage)	1/2"	DOC150D16	.09			DOC150D16-SS	.09
1.50"	.120" (11 Gage)	1/2"	DOC150D	.09	DOC150D-AL	.03	DOC150D-SS	.09
1.66" (1 1/4" Pipe)	.140" (Sch 40)	1/2"	DOC166D	.10	DOC166D-AL	.03	DOC166D-SS	.10
1.90" (1 1/2" Pipe)	.145" (Sch 40)	1/2"	DOC190D	.11	DOC190D-AL	.04	DOC190D-SS	.11
2"	.120" (11 Gage)	1/2"	DOC200D	.11	DOC200D-AL	.04	DOC200D-SS	.11

TYPE F-FLAT DRIVE-ON CAPS

Type F-flat drive-on caps are available in steel, stainless steel, and aluminum and are supplied with a mill finish. For additional sizes, materials, and finishes please call for a quote.



3003 Alloy

304 Alloy

A=Pipe or Tube Diameter	Fits Wall Thickness	H=Height	STEEL		ALUMINUM		STAINLESS	
			Part No.	Wt. Ea.	Part No.	Wt. Ea.	Part No.	Wt. Ea.
1.50"	.065" (16 Gage)	3/16"	DOD15016	.15			DOD15016-SS	.15
1.50"	.120" (11 Gage)	3/16"	DOD150	.15	DOD150-AL	.05	DOD150-SS	.15
1.66" (1 1/4" Pipe)	.140" (Sch 40)	3/16"	DOD166	.17	DOD166-AL	.06	DOD166-SS	.17
1.90" (1 1/2" Pipe)	.145" (Sch 40)	3/16"	DOD190	.20	DOD190-AL	.07	DOD190-SS	.20
2"	.120" (11 Gage)	3/16"	DOD200	.23	DOD200-AL	.08	DOD200-SS	.23

**NEED A CUSTOM BEND MADE?
NO PROBLEM! SEE OUR CUSTOM BENDING
SERVICES STARTING ON PAGE 48!**